

Monocrystalline Solar Module

505W-525W Mono BIFACIAL

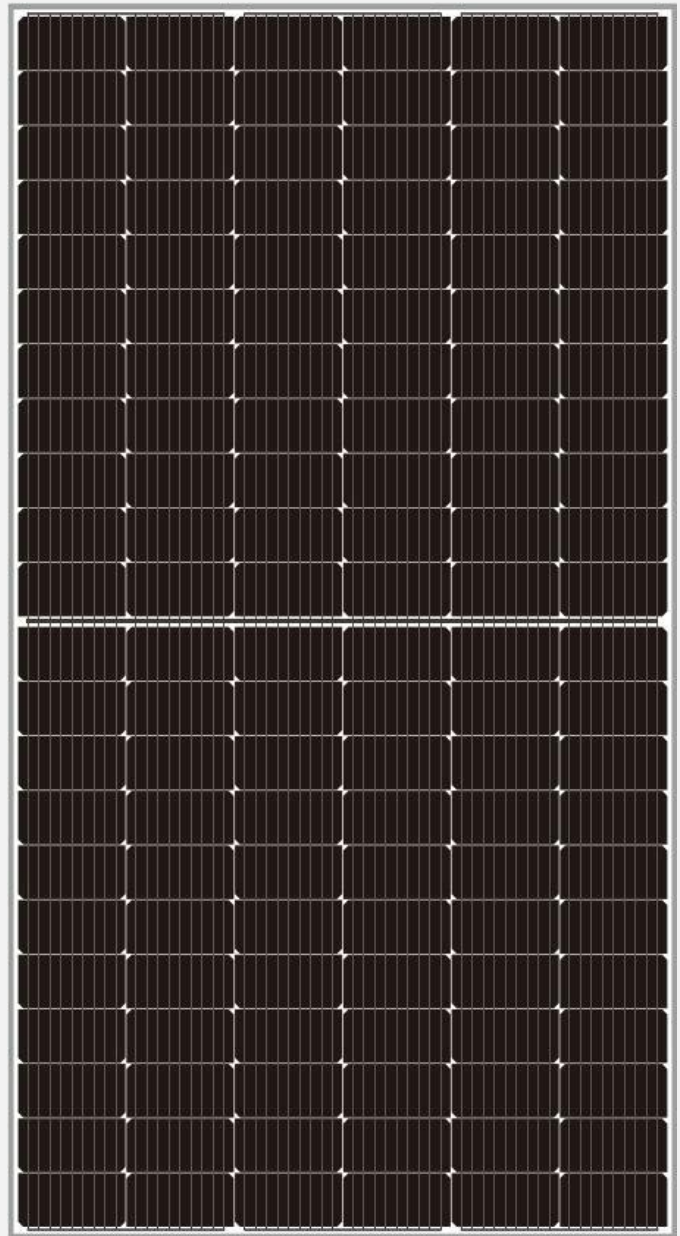
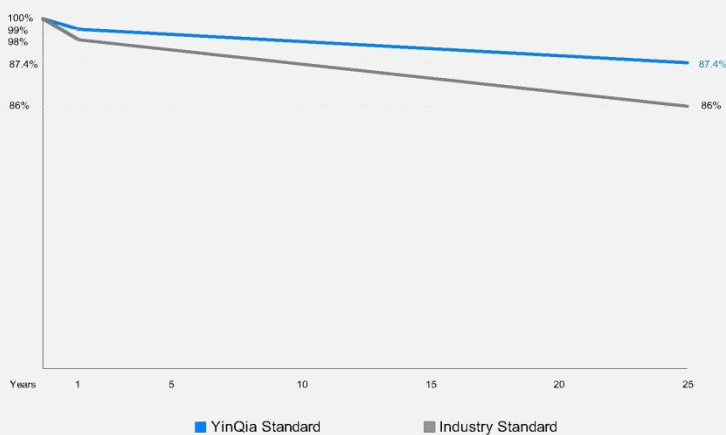
182mm N-TOPCon Cell 132 Half-cell Layout

Features

- ◆ High cell efficiency with quality silicon material for long term output stability and reliability
- ◆ Rigorous quality control to meet highest international standards
- ◆ High transmittance low iron tempered glass with enhanced Stiffness and impact resistance
- ◆ Unique frame design with high mechanical strength for easy installation
- ◆ Advanced encapsulation material with multi-layer sheet lamination to provide efficient protection from the severest environmental conditions
- ◆ Outstanding electrical performance under high temperature and low irradiance conditions

Applications

- ◆ Any large or small on-grid or off-grid solar power stations
- ◆ Commercial and industrial building roof-top systems
- ◆ Residential roof-top systems
- ◆ Any commercial or industrial ground mount systems
- ◆ Other industrial or commercial applications



- ISO9001:2015QMS
- ISO14001:2015EMS
- ISO45001:2018OHSMS
- IEC/EN 61215, IEC/EN 61730 Standard



HUANGSHAN YINQIA NEW ENERGY TECHNOLOGY CO.,LTD.

ADD: YANGXI ROAD, HUANGSHAN INDUSTRIAL PARK, HUANGSHAN REGION, HUANGSHAN, ANHUI, CHINA

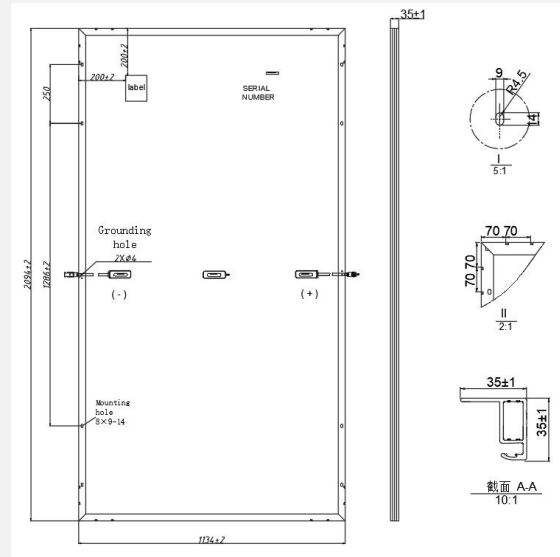
TEL:+86 559 8515292 | FAX:+86 559 8515296 | sales@yinqiasolar.com

www.yinqiasolar.com

YQ Mono I 505W-525W BIFACIAL

MECHANICAL CHARACTERISTICS

Solar Cells	N-type Mono
NO.of Cells	132(6×22)
Dimensions	2094×1134×35mm
Weight	28.5kgs
Front Glass	2.0mm coated semi tempered glass
Back Glass	2.0mm semi-tempered
Junction Box	Ip68 rated(3 by pass diodes)
	4.0mm ²
Output Cables	300mm
	Length can be customized
Connectors	Mc4 compatible
Mechanical load test	5400Pa



ELECTRICAL PARAMETERS

POWER CLASS	YQTG-505ND	YQTG-510ND	YQTG-515ND	YQTG-520ND	YQTG-525ND
	STC	STC	STC	STC	STC
Maximum power (Pmax)	505W	510W	515W	520W	525W
Open Circuit Voltage (Voc)	46.59V	46.75V	46.92V	47.08V	47.24V
Short Circuit Current (Isc)	13.91A	13.98A	14.05A	14.12A	14.19A
Voltage at Maximum power (Vmpp)	38.26V	38.43V	38.61V	38.78V	38.95V
Current Maximum Power (Impp)	13.20A	13.27A	13.34A	13.41A	13.48A
MODULE EFFICIENCY (%)	21.27%	21.48%	21.69%	21.90%	22.11%

STC:Irradiance 1000W/m²,cell temperature 25°C,AM 1.5G NOCT:Irradiance 800W/m²,ambient temperature 20°C,wind speed 1m/s,AM 1.5G

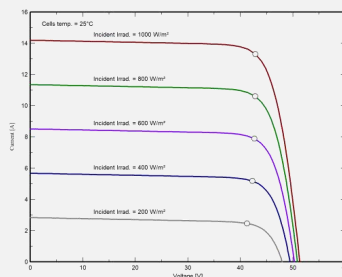
BIFACIAL OUTPUT-REARSIDE POWER GAIN

5%	Maximum power (Pmax)	530W	536W	541W	546W	551W
	Module Efficiency STC (%)	22.33%	22.55%	22.77%	22.99%	23.21%
15%	Maximum power (Pmax)	581W	587W	592W	598W	604W
	Module Efficiency STC (%)	24.46%	24.70%	24.94%	25.18%	25.43%
25%	Maximum power (Pmax)	631W	638W	644W	650W	656W
	Module Efficiency STC (%)	26.58%	26.85%	27.11%	27.37%	27.64%

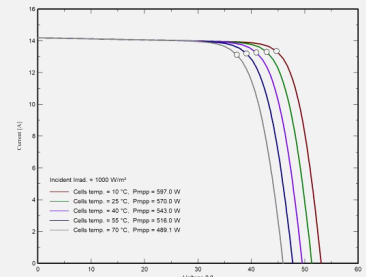
PACKING CONFIGURATION

Container	20'GP	40'HQ
Pieces per pallet	31	31+31
Pallets/container	5	10
Piece/ container	180	620
Dimension/Pallet	1270×1138 mm	2130×1138 mm
Gross/pallet	856Kg	1712Kg

I-V CURVE



YQTG-520ND



OPERATING CHARACTERISTICS

Operating Module Temperature	-40°C to +85°C	Nominal Operating Temperature (NOCT)	45±2°C
Maximum System Voltage	1500 DC (IEC)	Temperature Coefficient of Pmax	-0.30%/°C
Maximum Series Fuse Rating	25A	Temperature Coefficient of Voc	-0.25%/°C
Power Tolerance	0/+5W	Temperature Coefficient of Isc	+0.05%/°C

TEMPERATURE CHARACTERISTICS

Note: Due to continuous technical innovation, R&D and improvement, technical data above mentioned may be of modification accordingly. YQ SOLAR have the sole right to make such modification at anytime without further notice.